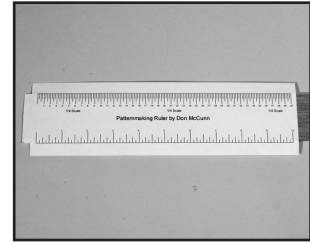
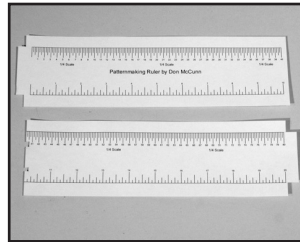
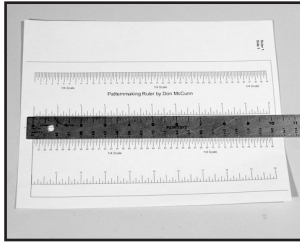
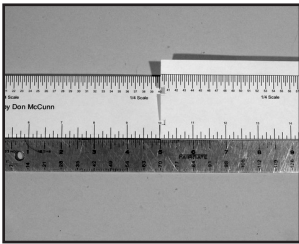


# Scale Rulers

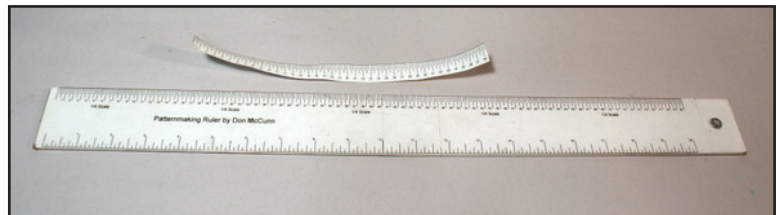
Scale rulers can be made by copying the following pages on copy paper or self-adhesive paper. The paper rulers can be cut and covered with tape to create a flexible tape measure. When the rulers are printed on adhesive paper they can be mounted on a stiff board made from wood, mat board, or a 2" (5 cm) plastic C-Thru ruler.



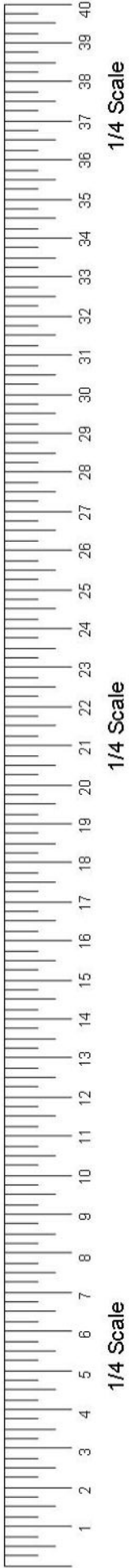
1. Cut two stiff boards 2" x 22" (5 x 56 cm).
2. Copy the scale rulers on label paper. Print at 100% so that each ruler section is 10" (25 cm) long.
3. Cut the label paper leaving a ½" (12 mm) overlap around the outside.
4. Notch the ends of the label paper as shown in the illustration above.
5. Attach the first half of the Side 1 scale ruler to the stiff board. The horizontal lines of the ruler should align to both edges of the stiff board.
6. Fold over the ends and sides of the paper to the back of the stiff board.



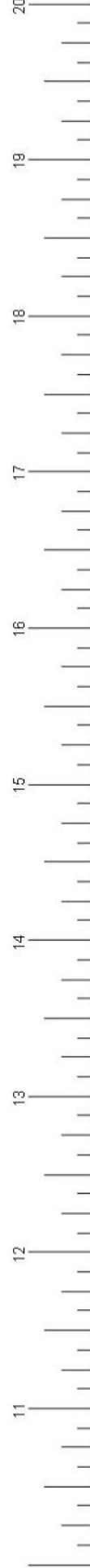
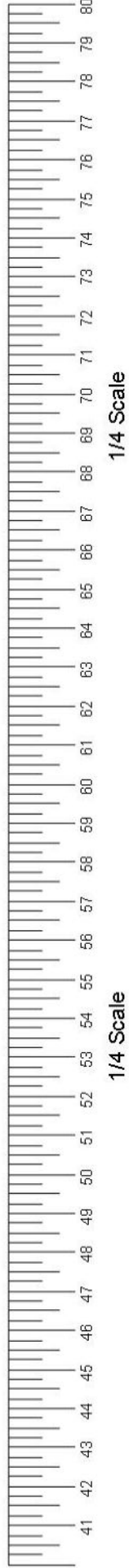
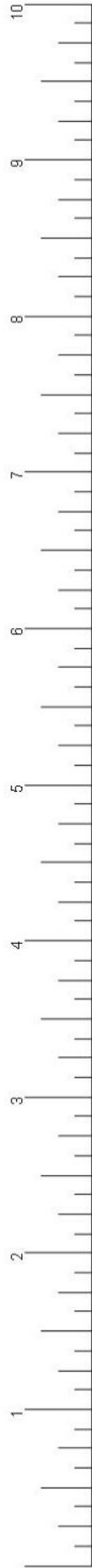
7. Carefully align the second half of Side 1 to the first half. Fold over the sides of the paper to the back of the stiff board.
8. Attach Side 2 of the scale ruler to the opposite side of the stiff board, then trim off the excess paper.
9. Cover the scale ruler with clear tape or laminating sheet.



Tape Measure (flexible paper ruler)  
& Scale Ruler (mounted on stiff board)



### Patternmaking Ruler by Don McCunn

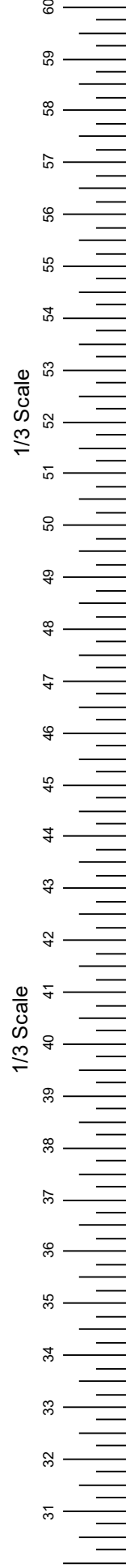
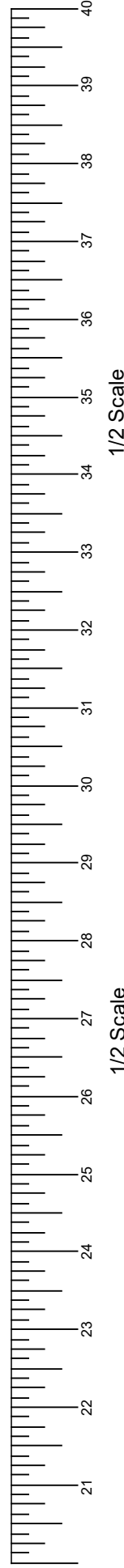
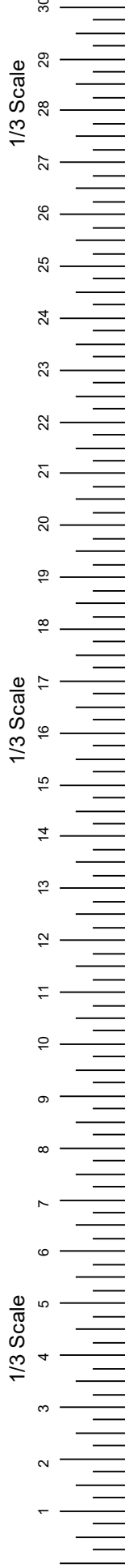


Rulers in  
Inches  
Side 1

Rulers in  
Inches  
Side 2



### Patternmaking Ruler by Don McCunn





1/4 Scale

1/4 Scale

1/4 Scale

## Patternmaking Ruler by Don McCunn



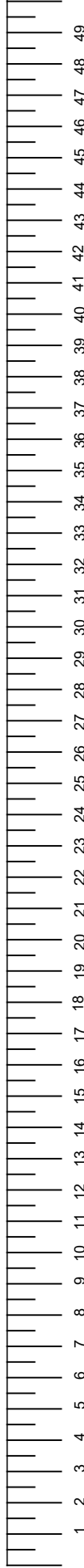
1/4 Scale

1/4 Scale



Rulers in  
CM  
Side 1

Rulers in  
CM  
Side 2



1/2 Scale

1/2 Scale

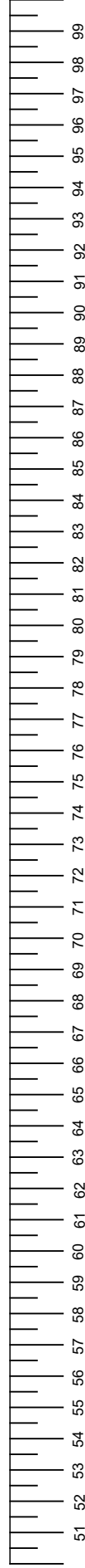
1/2 Scale

### Patternmaking Ruler by Don McCunn

1/3 Scale

1/3 Scale

1/3 Scale



1/2 Scale

1/2 Scale

1/3 Scale

1/3 Scale

